

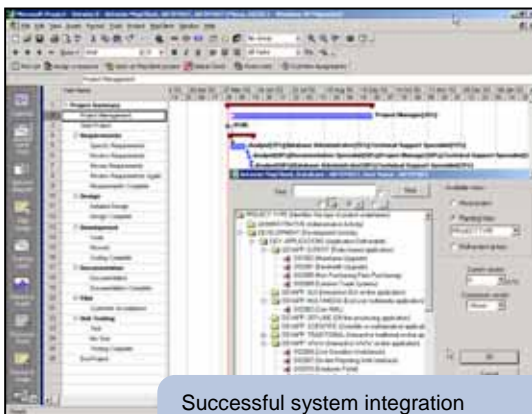
Artemis Views

Advanced MSP Planning

With MSPClient

Microsoft Project® Integration with Artemis Views™ The best of both worlds:

- Provide access to centralized MS Project through Artemis Project Management Portal
- Extend Microsoft Project capabilities with timesheets, project alerts, and enhanced multi-project reporting and planning
- Manage multiple projects at the department or enterprise level
- Provide visibility on projects and resources using multiple criteria consolidations
- Select the best available resources based on accurate resource views
- Establish enterprise-wide standards across projects
- Enable offline management of centrally maintained projects
- Easy-to-use, minimal retraining
- Disseminate project management practices to users, while still Combined WBS, OBS, Control account and Work package management.



Successful system integration combines the full benefits of the two environments

With Artemis Advanced MSP Planning, Artemis Project Management users can manage their projects and resources via a standard Microsoft Project desktop environment.

The result is full access to powerful MS Project features and the benefits of a centrally shared database.

Pathway To Enterprise-Wide Project and Resource Management

If you already use MS Project, Advanced MSP Planning is the ideal solution to implement standards, and process and consolidate dashboards in a central system that enables visibility and control of your project and resource portfolio.

Advanced MSP Planning combines the capacity and ease-of-use of the MS Project desktop tool with the proven benefits of secure, structured and shared information available through Artemis Views database.

Seamless Integration

Advanced MSP Planning is not just another interface with MS Project. We provide a true integration based on an architecture in which the desktop object is encapsulated in a global solution that relies on a shared database.

After connection and secured user identification, the project and resource information relevant to you can be directly accessed and manipulated using MS Project native and additional built-in features. Data access is provided using any combination of project and resource information stored in Artemis Views, such as :

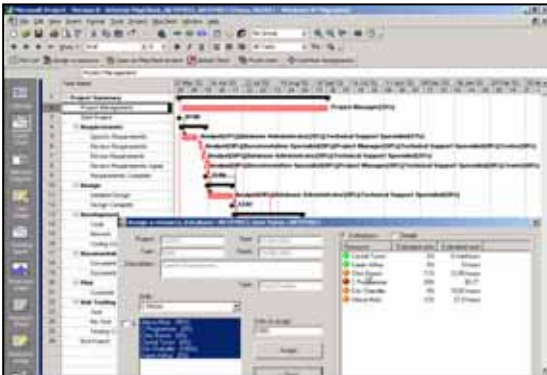
- Project portfolio identification
- User codes at project, activity, or resource levels
- Project version types (e.g., baselines, currents, What6if versions, etc.)
- Visibility axes (e.g., Project Managers, skills, organization entities, task type, resources, etc.)

Updated data is then stored back to the central Views database to be shared with other authorized users.

A Complete Solution For Resource Managers

Advanced MSP Planning provides managers with consolidated views of resource workloads across multiple projects. This information is not organized by project or task, but by resource. As a result, managers are able to quickly and easily determine optimal workload allocation by true resource availability – taking into account required delivery dates.

Advanced MSP Planning provides information on resource occupancy levels using percentages and traffic light indicators.



The Advanced MSP Planning resource allocation engine determines the most relevant resources according to skill-sets and true availability

Centralized Security And Administration

Advanced MSP Planning access is as defined in Artemis Project Management, to deliver only duly authorized information contained in the database.

With Artemis Project Management, organizations can establish security privileges for each individual or workgroup. This is essential for ensuring hierarchical security of projects, while still providing users with high visibility of shared projects and resources – whether loaded as access mode (read-only), or exclusive access mode (full use).

For more information contact the office nearest you
Please visit us at www.aisc.com

WORLDWIDE HQ
Newport Beach, CA
United States
1-800.477.6648

WORLDWIDE LOCATIONS

Argentina
Buenos Aires
Australia
Sydney
Brazil
Sao Paulo

Canada
Québec
Chile
Santiago
China
Shanghai
Denmark
Copenhagen
Finland
Espoo

France
Sèvres
Germany
Munich
Hong Kong
Hong Kong
India
New Delhi
Indonesia
Jakarta
Italy
Milan & Rome

Japan
Tokyo
Korea
Seoul
Malaysia
Kuala Lumpur
Netherlands & Central Europe
Purmerend
New Zealand
Auckland
Norway
Oslo
Portugal
Lisbon

Russia
Moscow
Singapore
Singapore
South Africa
Johannesburg
Spain
Madrid
Sweden
Stockholm
United Kingdom
Slough, London
United States
Longmont, CO
Newport Beach, CA
New York, NY
Venezuela
Caracas

Beyond MS Project

MS Project has become the most widely-recognized standard for desktop project and resource management. This tool is based on robust features to manage individual resources, including – but not limited to – the following:

- Resource availability
- Split scheduling
- Repeatable tasks
- Load-based durations
- Logic constraint options
- Control accounts, Workpackages, earned value methods, and resource attributes from CostView

With Advanced MSP Planning, these functions are fully supported in the Project Management data structure. But the full benefits of Advanced MSP Planning exceed the standard MS Project features by offering an effective resource search and allocation engine.

Moreover the Advanced MSP Planning offline capability allows you to download one or more projects on your PC, while securely locking them in the central Artemis Views database.

Main Supported Environments

Database

- Oracle or SQL Server

Client

- OS: Windows
- Integration: Microsoft Project (standard and professional)